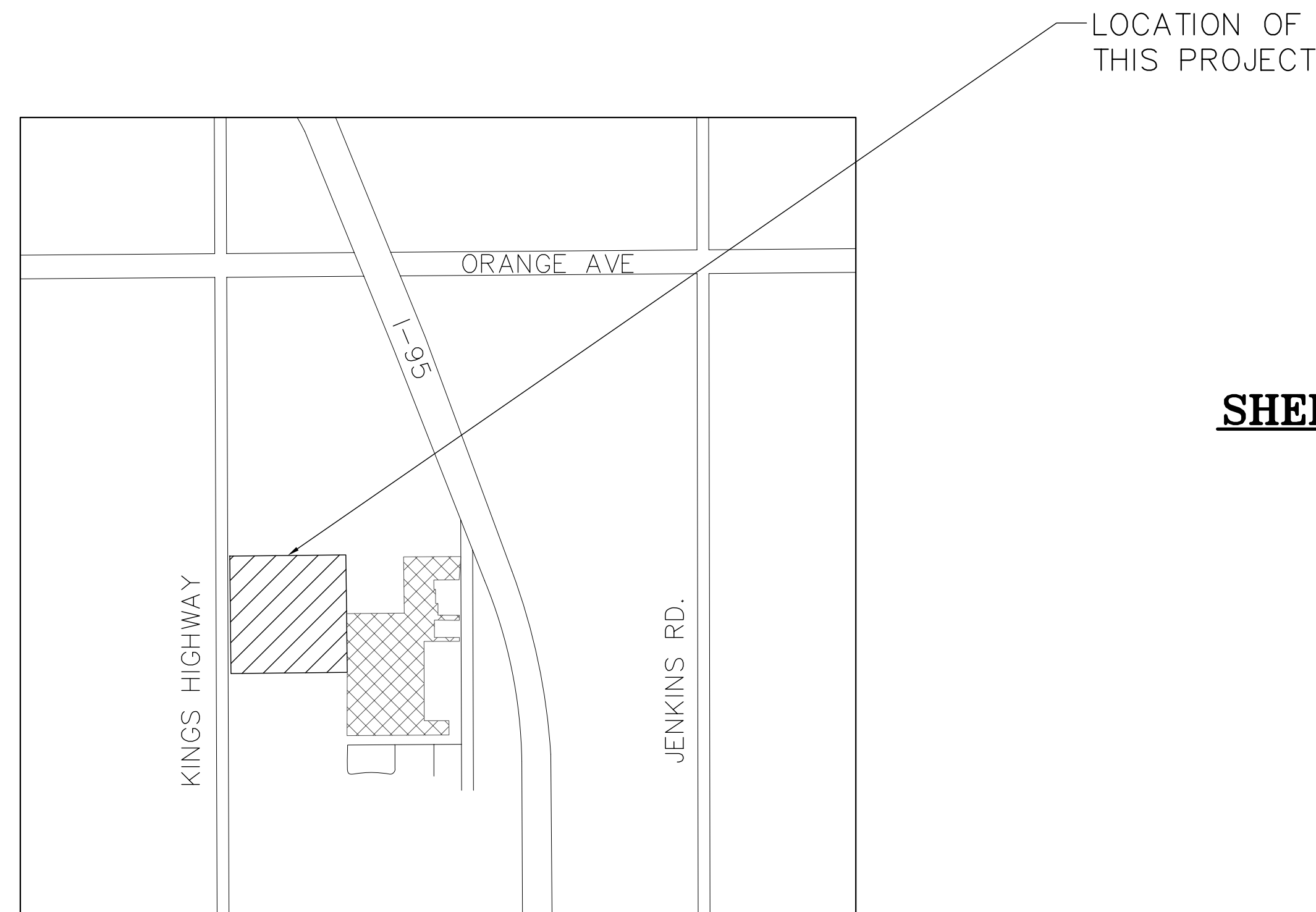


PRELIMINARY ENGINEERING PLAN FOR SUMMIT CENTER FORT PIERCE, FLORIDA

DEVELOPER: **KINGS HIGHWAY VILLAGE, LLC**
2701 RAVELLA WAY
PALM BEACH GARDENS, FL 33410



NOT TO SCALE
LOCATION MAP

INDEX OF SHEETS

SHEET No.

DESCRIPTION

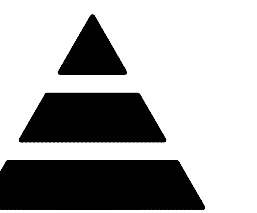
PE1	SITE OVERVIEW
PE2	PRELIMINARY ENGINEERING PLAN
PE3	PRELIMINARY ENGINEERING PLAN
PE4	PRELIMINARY ENGINEERING PLAN
PE5	PRELIMINARY ENGINEERING PLAN
PE6	PRELIMINARY ENGINEERING PLAN
PE7	PRELIMINARY ENGINEERING PLAN
PE8	PRELIMINARY ENGINEERING DETAILS



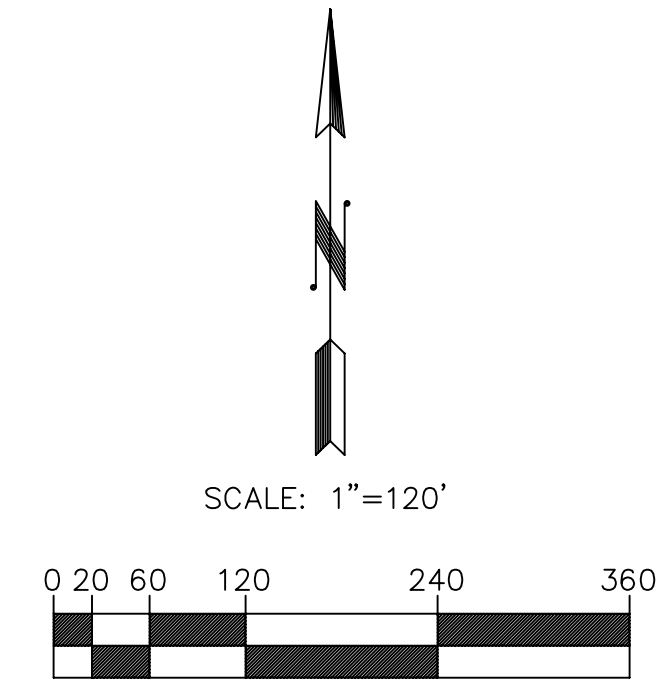
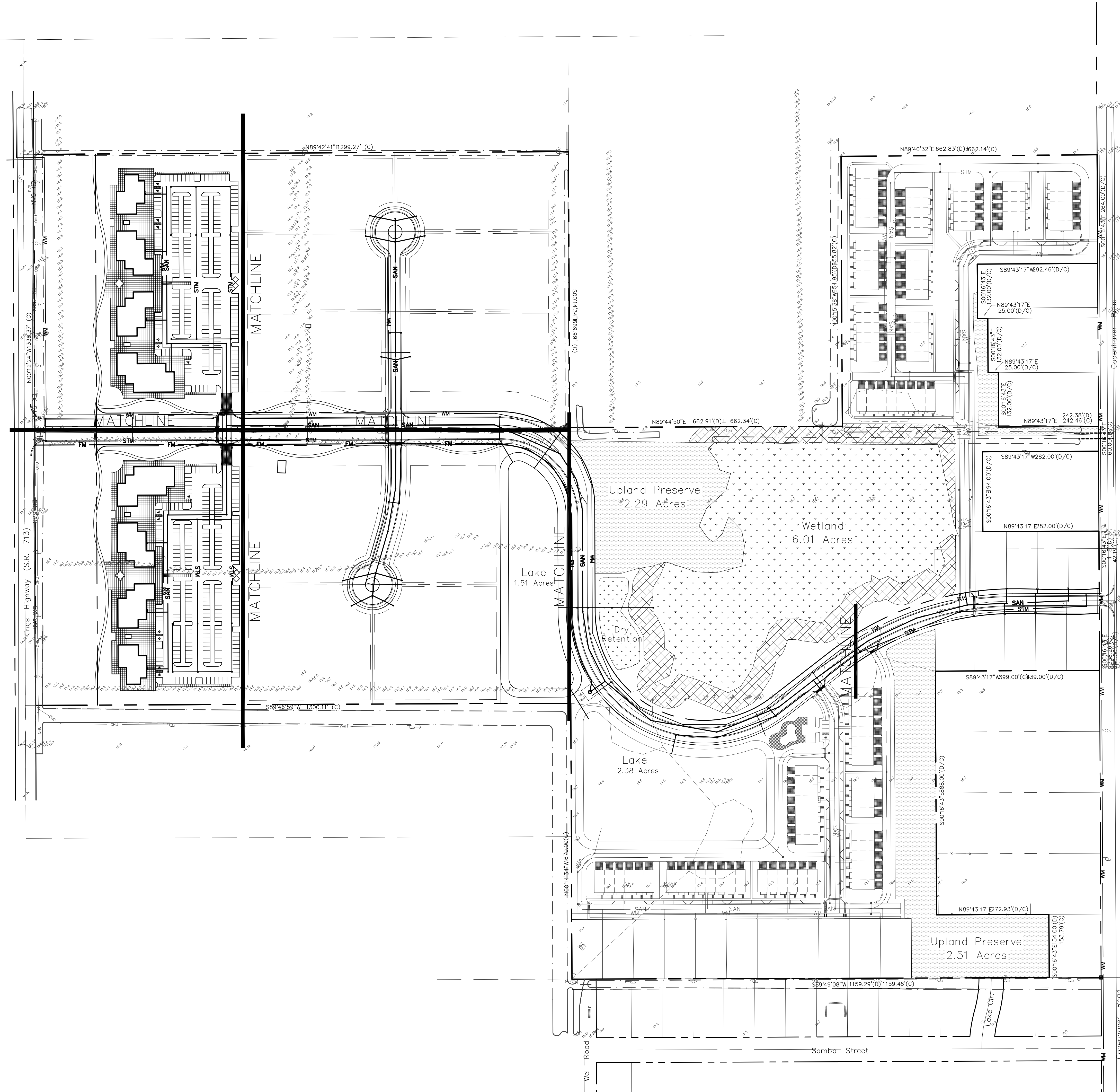
1928 COMMERCE LANE, SUITE 2, JUPITER, FLORIDA
561-747-8335 • FAX 561-747-5780
email - info@smiley-associates.com
EB # 8613

SEAL
MARK SMILEY, P.E.
FL. LICENSE #54664

CIVIL



SA JOB # 06-043



REV.	DESCRIPTION	APRV.	DATE

SMILEY & ASSOCIATES, INC.
 1928 COMMERCE LANE, SUITE 2, JUPITER, FLORIDA 33458
 561-747-8335 • FAX 561-747-5780
 smiley@smiley-associates.com
 EB # 8613

SUMMIT CENTER
 FOR
 KINGS HIGHWAY VILLAGE, LLC
 PALM BEACH GARDENS, FLORIDA
 SITE OVERVIEW

SEALED
 MARK C. SMILEY, P.E.
 FL. LICENSE # 54864

DATE	1/2/2007
DRT	RP
DSG	RG
CHK	MCS
CADDWG	06-043

PE1
 SHEET TYPE
 SHEET#1 OF 8
 JOB # 06-043